



height	190	chest	98	dress	46/48
hair	lightbrown	waist	77	collar	42
eyes	lightblue	hips	93	shoes	45



simon



tune models

+ 49 171 990 94 32

mail@tune-models.com

tune-models.com

#tunefamily



simon



tune models

+ 49 171 990 94 32

mail@tune-models.com

tune-models.com

#tunefamily



simon



tune models

+ 49 171 990 94 32

mail@tune-models.com

tune-models.com

#tunefamily



simon



CAZAL
»MOD 684«
-
outfit VIN_PERIUM DÜSSELDORF
tie VALENTINO
earring JIL SANDER

50 SPECTR // FASHION SHOOT

tune models

mail@tune-models.com

+ 49 171 990 94 32

tune-models.com

#tunefamily

TM
tune MODELS



simon

tune models

mail@tune-models.com

+ 49 171 990 94 32

tune-models.com

#tunefamily



simon



tune models

mail@tune-models.com

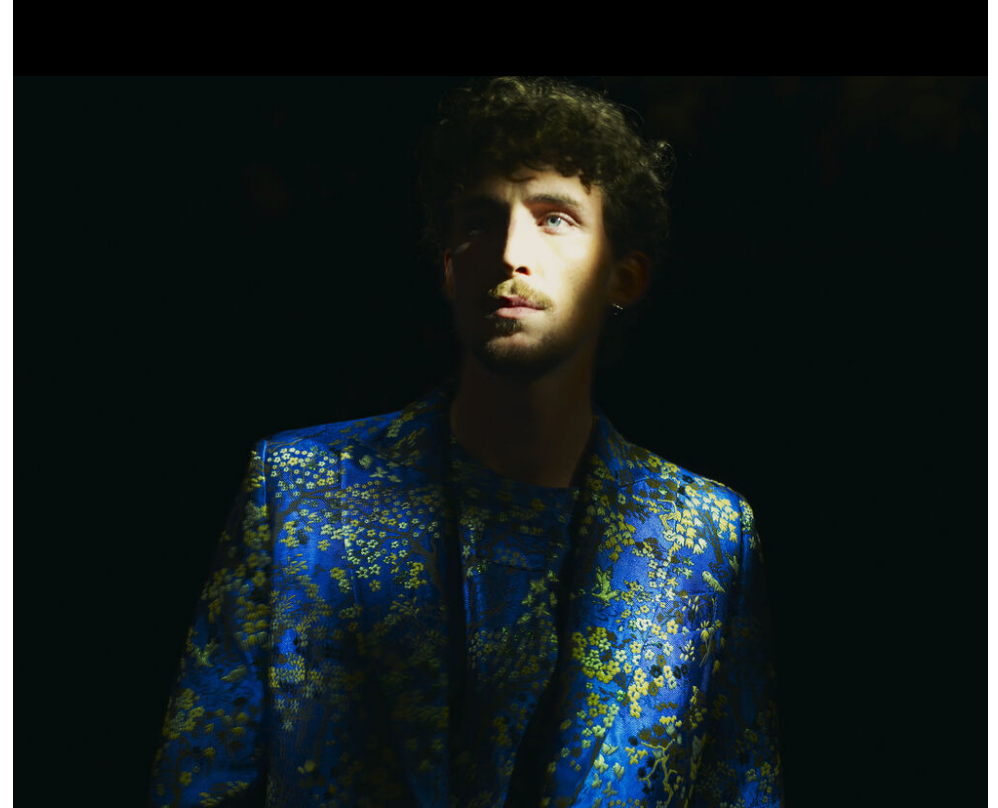
tune-models.com

+ 49 171 990 94 32

#tunefamily



simon



tune models

mail@tune-models.com

tune-models.com

+ 49 171 990 94 32

#tunefamily



KADOR

»BIG line 1«

shirt & pants J. LINDBERG

tank top ACNE STUDIOS

cap VINTAGE

necklace CUSTOMISED BY YEHOR

simon



tune models

mail@tune-models.com

tune-models.com

+ 49 171 990 94 32

#tunefamily



simon



tune models

+ 49 171 990 94 32

mail@tune-models.com

tune-models.com

#tunefamily

TM
TUNE MODELS



simon

tune models

mail@tune-models.com

tune-models.com

+ 49 171 990 94 32

#tunefamily



MASUNAGA

»Kaguya«

jacket **PRADA**
black collar **ANGELIKA KAUFMANN**

simon



tune models

mail@tune-models.com

+ 49 171 990 94 32

tune-models.com

#tunefamily



SILHOUETTE
»Escondido«
-
outfit ADIDAS
earring JIL SANDER

BOLD EYEWEAR AT ITS BEST

What unites photographer Estelle Klawitter with stylists Rolf & Raphael from Style with a Smile? On one hand, their creative base in the fashion metropolis of Düsseldorf. On the other, their long-standing contribution to SPECTR since day one. Over the years, they've collaborated on numerous iconic looks — including their latest project: EYES WIDE BOLD.

At the heart of this production: bold, extravagant eyewear worn by male protagonists and captured in Estelle Klawitter's unmistakable visual language. Whether optical frames or sunglasses, the selection is anything but subtle. BLACKFIN, CAZAL, KADOR, MASUNAGA, SILHOUETTE, and VYSEN represent a design ethos that champions individuality. Each frame speaks its own iconic language.

Paired with the avant-garde stylings of Rolf & Raphael, fashion and eyewear fuse into a visionary whole. Top-notch from Düsseldorf — with style, attitude, and a flair for the extraordinary.



simon

tune models

mail@tune-models.com

tune-models.com

+ 49 171 990 94 32

#tunefamily



simon

tune models

+ 49 171 990 94 32

mail@tune-models.com

tune-models.com

#tunefamily



simon



tune models

mail@tune-models.com

tune-models.com

+ 49 171 990 94 32

#tunefamily



simon



tune models

mail@tune-models.com

tune-models.com

+ 49 171 990 94 32

#tunefamily



simon



tune models

mail@tune-models.com

tune-models.com

+ 49 171 990 94 32

#tunefamily



simon



tune models

mail@tune-models.com

tune-models.com

+ 49 171 990 94 32

#tunefamily



simon



tune models

mail@tune-models.com

tune-models.com

+ 49 171 990 94 32

#tunefamily





FACTS & EXPERIENCE

NATIONALITY	GERMAN
ORIGIN	GERMAN
LANGUAGES	GERMAN, ENGLISH
PRONOUN	HE/HIM
TALENTS	ORGANIC FARMER, ARTIST
AGE	31y.
ORIGIN	
CLIENTS	SPECTR MAGAZINE
PHOTOGRAPHERS	ESTELLE KLAWITTER STEFAN MILEV
MOTHER AGENCY	TUNE MODEL MGMT

simon

tune models

+ 49 171 990 94 32

mail@tune-models.com

tune-models.com

#tunefamily